

Coaching Dog-Dog Interactions

Devan Amundsen, CPDT-KA, CBCC-KA

About Me

Dog training since 2010

Animal shelters since 2011

CPDT and CBCC since 2012-2013

Teaching AS/BS courses since 2018

Assistance dogs since 2020

Oakland Animal Services - Remote

Animal Welfare United

Not perfect.



1. Evaluation
2. Talking Points
3. Current Programs*

Evaluation:
What are we
looking for?

What is the purpose?

Outcome Pathway

Safety / Predictability

Capacity / Programs

Outcome Matching

Adopters? Fosters?

Enrichment

Training

Behavior Modification



**Sephora,
Stryder, Gorda,
Sprouts, Happy,
And Sita!**

Pathway Planning



What safety tools are necessary to avoid harm to other people/dogs?

Muzzle?

No Off-Leash?

Above-Average Dog Knowledge?

Do our current programs *support* the use of these tools?

Person at time of pickup

Person supporting post-placement

Outcome Matching

Avoid definite statements

"This dog *is* dog selective."

"This dog *prefers* male dogs."

Define *your* jargon (*in writing*)

Forward, dominant, submissive, deferential, worried, confident, reactive, correction, etc.



Enrichment

Training

Recall during play

Attention around distractions

Behavior Modification

Teaching social skills

Modifying emotional response

Consider context/generalization



What are each of the following types of evaluations telling us?

On-Leash at a Distance

On-Leash with Contact

On-Leash During Walk

What is the other (decoy) dog doing?

Barking? Staring? Looking at handler?

Off-leash with multiple dogs at the shelter

Off-leash with single dog at the shelter

Off-leash with multiple dogs in a foster home

Off-leash with single dog in a foster home

How were they introduced?

What are their genders, ages, genetics, training histories, dog interaction histories, etc

Consider context

What skills are necessary for each of the following contexts?

Dog Park

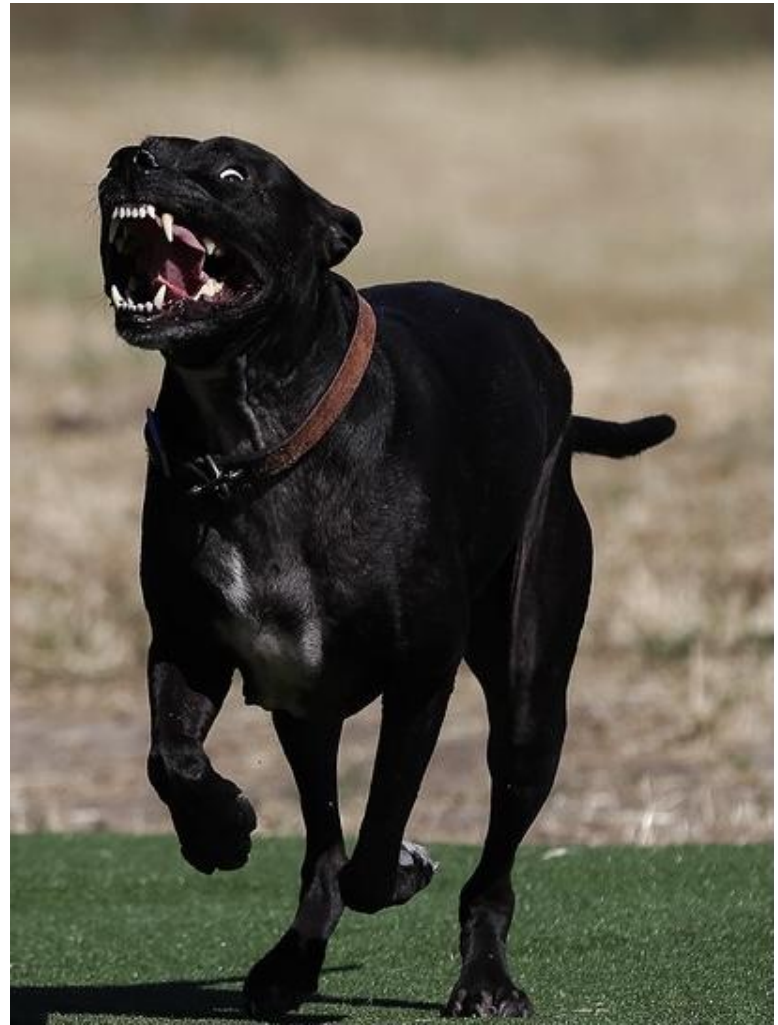
Playgroup in Shelter

Playgroup at Daycare

Group Dog Walks

Foster Home

Adopter Home



2. Talking Points

Don't predict.
Just inform.

Get comfortable
with saying
“I don't know...”





Training Staff, Volunteers, Fosters, etc

Is this dog reading the other dog's communication?

Is this dog communicating what they want?

Is this dog benefitting from this interaction?

Advanced:
How can I support the development of those skills?



Examples of Dog-Dog Skills



Dog-Centric

- Asking to start/stop/change play
- Asking to start/stop/change interaction
- De-escalating conflict
- Regulating arousal/excitement
- Reading dog communication

Human-Centric

- Attention on handler around dogs
- Motivation to interact with handler

Use of Tools

Leashes

Muzzles

Fences

Long-Leashes

Space

Interrupters

Handler(s)

Punishers

Food

Emergency
Management

Toys

Obstacles



Punishment vs Interruption

Punishment

- Decrease in frequency of behavior
- Learner perceives the stimulus as unpleasant *and will work to avoid it in the future.*

Interruption

- Momentarily disrupts behavior
- Followed by instruction(?)



Don't predict.
Just inform.

Get comfortable with saying
“I don’t know...”
*“...But here’s how I can
support you.”*